

NEXTURE
FLOOR



No.41, Fuhua Road, Xiyuan Community, West District,
Zhongshan City (2nd Floor, Jinjia Innovation Port)

- +86 135 27143435
- +86 173 28570527
- +86 197 19794824
- sales@resolution-go.com
- www.resolution-go.com

WE CARE
WE VALUE
WE CREATE



NEXTURE
FLOOR

**We are committed to outstanding
quality and customer service.**

ENJOY NATURE BUT DON'T WANT TO PLUNDER NATURAL RESOURCES

■ WE CARE

■ WE VALUE

■ WE CREATE





We Care
 We Value
 We Create.
 Enjoy nature
 But don't want to plunder natural resources;

NEXTURE FLOOR

CONTENTS

ABOUT US	01-02
PRODUCTION BASE	03-08
WHY CHOOSE EUYOPIA	09-10
SPC WALL PANEL SERIES	11-22
ONE STOP FLOORING SOLUTION	23-24
RIGID CORE SERIES(SPC)	27-30
POLYWOOD SERIES(DRY BACK)	31-46
LOOSE LAY SERIES	47-52
SPECIFICATIONS	53-54
PRODUCT STRUCTURE DIAGRAM	55-56
CARE AND MAINTENANCE	57-58



About us

Guangzhou OPEL New Advanced Material Stock Co., Ltd is a professional high-tech multinational enterprise, integrated with R&D, design, manufacture and offering the solutions for the environmental elastic materials, such as PVC flooring, LVT and rubber. The flooring materials are widely used in where people live, work, learn, heal, and play.

The production base of the company is located in Cuishanhu Industrial Zone, Kaiping City, Guangdong province. The 100,000 square meters standard workshops and advanced production lines provide the uncompromising quality products, superior service and support.

In order to develop more state of the art flooring materials and make us more competitive, we are the first in the industry to cooperate with South China University of Technology to establish a laboratory, to research and develop the new materials which own the leading technology in the world and have our own patent, thus to widely popularized and applied the resilient flooring advanced technology in both residential and commercial area.

After years of hard working, the brand 'NEXTURE' has gained the famous reputation all over the world, the products are highly accepted by North America, South America, Middle East, Asia, Africa market because of the high performance-price ratio and the environmental features. We do not only satisfied with ISO9000 and ISO14000 quality system certification, but also improve our own requirement constantly, strengthen quality inspecting to achieve even higher system certification, have obtained the certifications of TUV, CE, CQC and SGS.

Thanks for all the clients' kind cooperation, the company has been a listed company successfully in 2017, with the higher technology content and the green environmental protection concept, 'NEXTURE' will endeavor in improving the human being's living environment as our sustainable development strategy!

QUALITY LIFE CREATED BY EUYOPIA

Having a foothold in China and heading for the world,
we carefully create 'NEXTURE' brand by our relentless pursuit of perfection,
the strict management and well-built, satisfactory service .



Production Base





Perfecting Technique
Innovating Continuously

Production Base





Production Base





Why choose NEXTURE ?

■ HIGH EFFICIENCY SERVICE

NEXTURE committed to create innovative flooring solutions from consulting, design, installation, maintenance to refurbishment, the superior service and support run through the whole product life cycle.

■ PERFORMANCE & SUSTAINABILITY

With the uncompromising quality and persistent innovation, NEXTURE gain the reputation all over the world because of its unique performance.

■ OUTSTANDING DESIGN

The unique designs, patterns and color selections make it easier to coordinate your flooring selection to fulfill your vision.

■ ECONOMY

The management of science, the craft of science, leads of equipment, the mechanism of norm brings the high quality price ratio products, to offer the clients high investment returns.

■ ENVIRONMENTAL

By applying advanced technology and virgin materials, we never stop analyzing the impact and lifecycle of our products from start to finish, make sure NEXTURE's products are recyclable and environmental.

■ RECOMMENDED APPLICATIONS



Offices, Work Places



Factories & Workshops



Transportation Systems



Home & Summer House



Hospitals and Medical systems



Schools and Kindergartens



Gallery Halls & Museums



Commercial Facilities



Hotels

■ Global Certifications & Management System



China Environment Labeling (Type II)



FLOORSCORE Certified



CE Approved



SGS Certified



CNAS Approved



OHSAS18001 Approved



ISO 14001 Management System Standard



ISO 9001:2000 Approved



TUV Certified



REACH Certified



Quality supervision and inspection agency certification



China Metrology Accreditation

■ WE CARE

■ WE VALUE

■ WE CREATE

ENJOY NATURE BUT DON'T WANT TO PLUNDER NATURAL RESOURCES

SPC Wall Panel Series

Come in diversified constructions, NEXTURE SPC features dramatic visual designs and one of the best warranties in the industry. SPC Wall Panel and SPC flooring share the same substrate, so it is 100% waterproof, kid proof and pet proof. Its easy installation and soft touch make it become popular in the market. Whether you're looking to create a cozy living room, a sophisticated office space, or a stylish retail environment, NEXTURE SPC WALL PANELS are the perfect choice to enhance the overall aesthetics and ambiance of your space. With their artful design and high-quality construction, these wall panels are sure to make a lasting impression.

Specifications: 4mmX90cmX240/260/280cm-0.1mm wear layer

SPC Wall Panel Construction

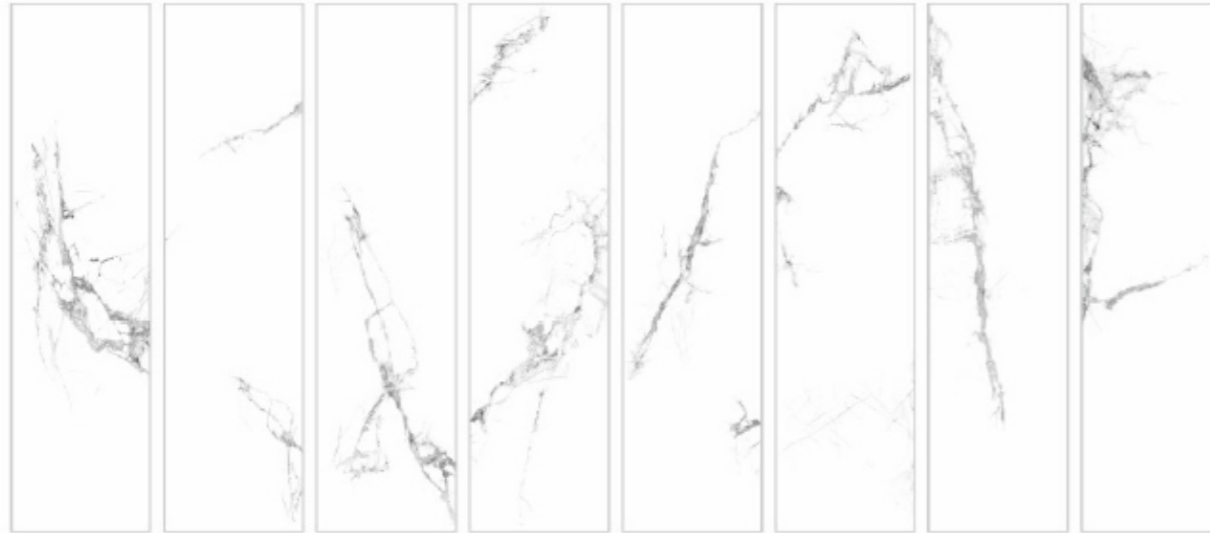


Special Notes: Pictures are just for reference only, because of printing caused chromatic difference from the objects, please consult with the real products.

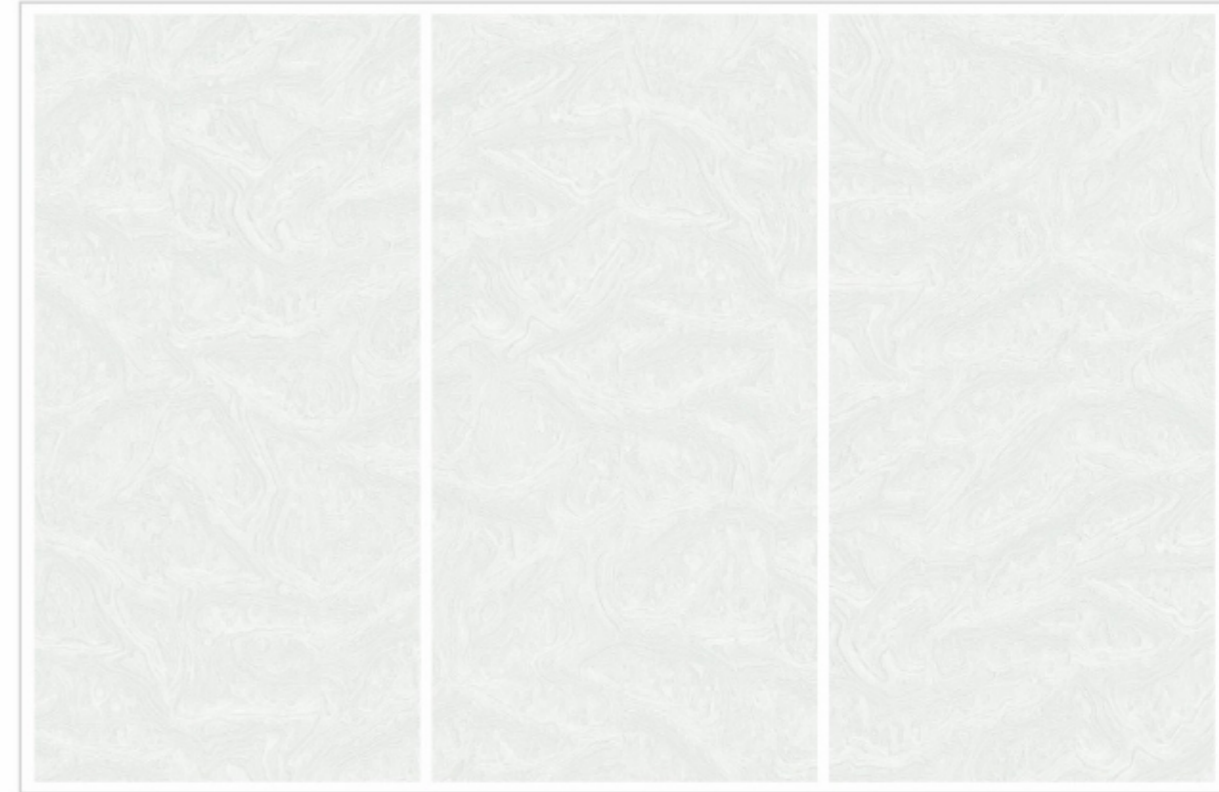
SPC Wall Panel Collections:

StoneGlam Series

Many people believe luxury natural stone is the best return on investment, but stone is often too expensive for most people. To replicate the texture of natural stone found in expensive stone tiles, NEXTURE strives to collect all varieties of expensive and rare stone materials for high precision scanning, so that we recreate them using Rigid Core technology.



OSW-100011



OSW-706181



OSW-790043

■ WE CARE

■ WE VALUE

■ WE CREATE



OSW-790029



ENJOY NATURE BUT DON'T WANT TO PLUNDER NATURAL RESOURCES



OSW-790026



OSW-790024

Special Notes: Pictures are just for reference only, because of printing caused chromatic difference from the objects, please consult with the real products.

■ WE CARE

■ WE VALUE

■ WE CREATE

WoodEssence Series

NEXTURE WoodEssence SPC Wall Panels offer a captivating blend of natural elegance and modern functionality. Each panel is crafted to replicate the intricate grain patterns and warm textures of real wood, delivering a luxurious and authentic visual experience. With its durability and easy installation, WoodEssence Series is the perfect choice for enhancing the aesthetics of any interior space while ensuring long-lasting performance. Whether it's for residential or commercial use, our SPC WoodEssence Series Wall Panels bring the warmth and beauty of natural wood to your walls, transforming them into a focal point of your design.



OSW-706494



OSW-706511

ENJOY NATURE BUT DON'T WANT TO PLUNDER NATURAL RESOURCES



OSW-706232



OSW-706495



Special Notes: Pictures are just for reference only, because of printing caused chromatic difference from the objects, please consult with the real products.

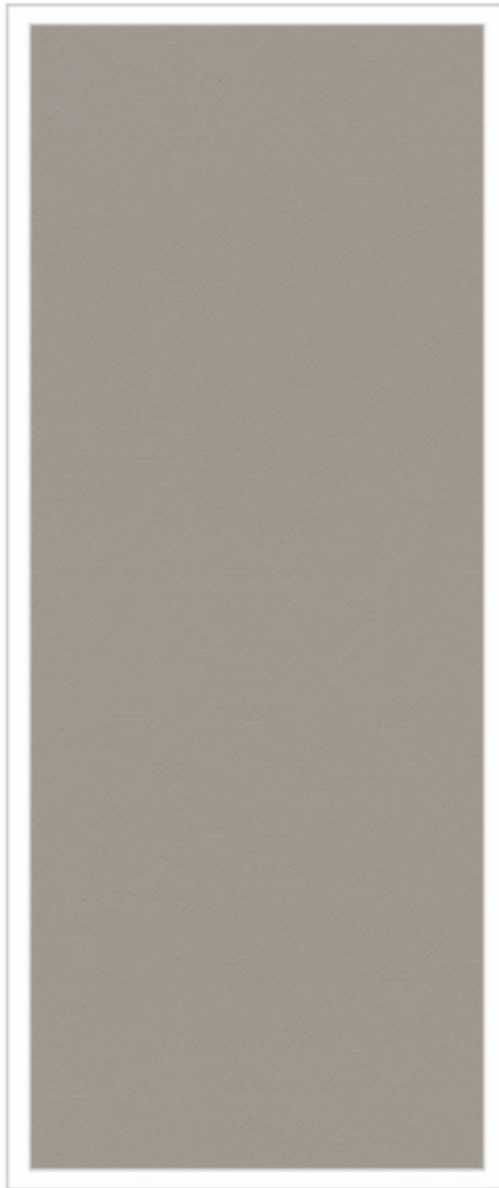
■ WE CARE

■ WE VALUE

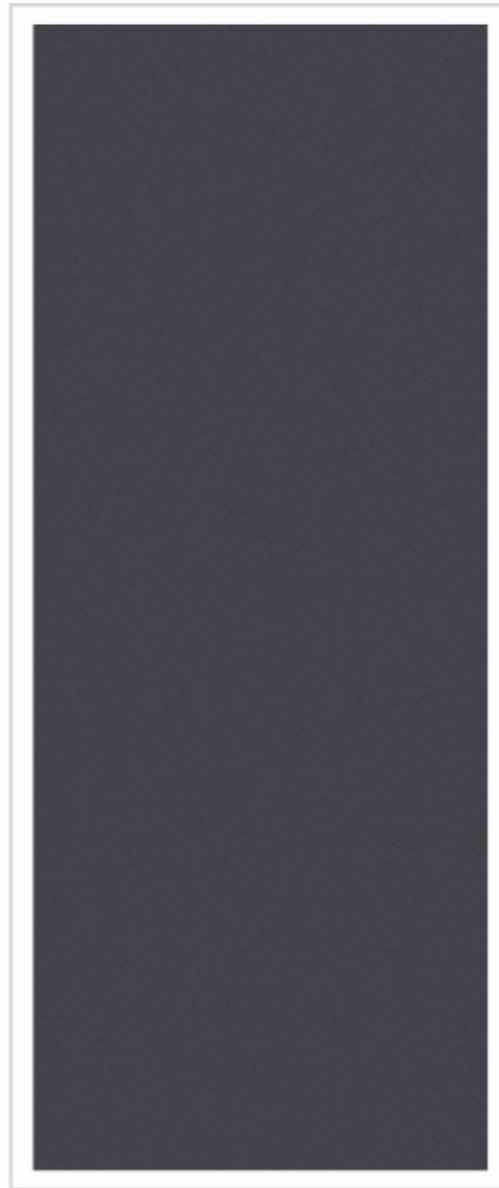
■ WE CREATE

FabricAura Series

NEXTURE FabricAura SPC Wall Panels are designed to bring elegance and warmth to any interior space. With their intricate and realistic fabric texture, these wall panels offer a unique visual experience that transforms walls into a captivating backdrop. FabricAura Series embodies the softness and comfort associated with fabric, while maintaining the durability and practicality of SPC materials.

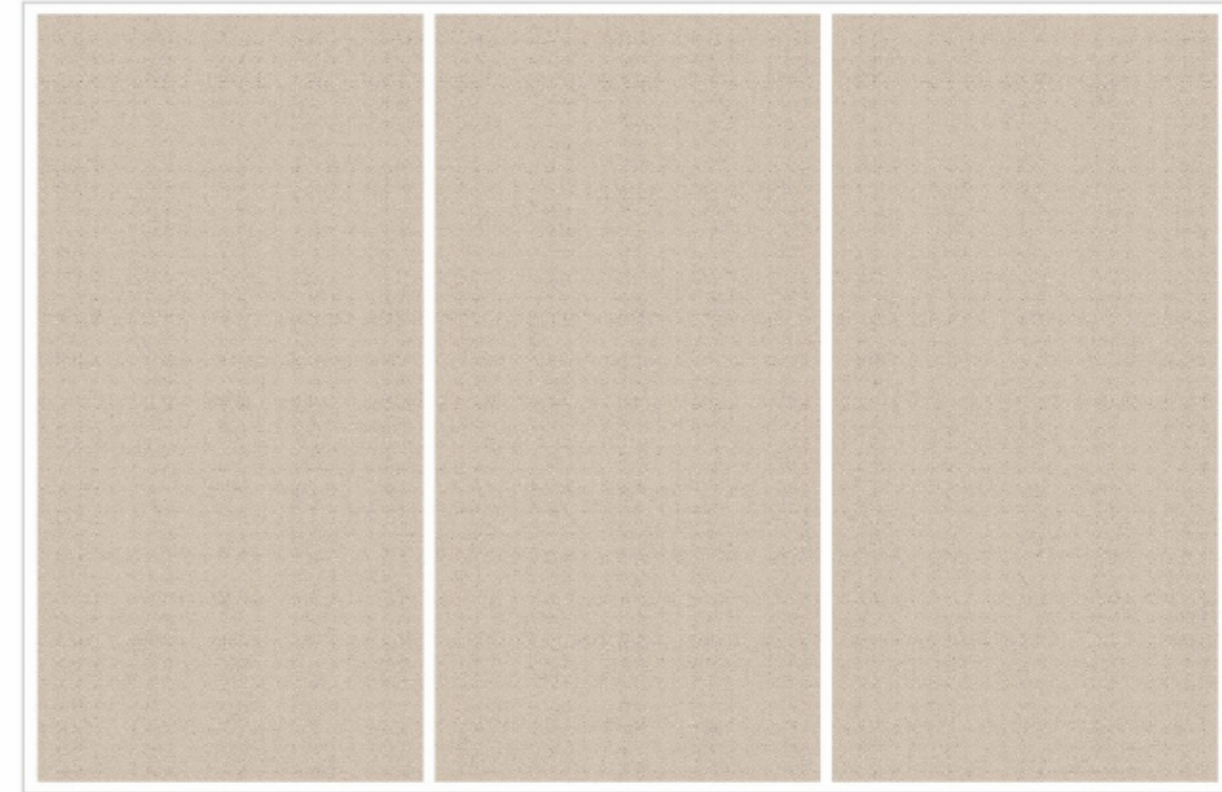


OSW-706473

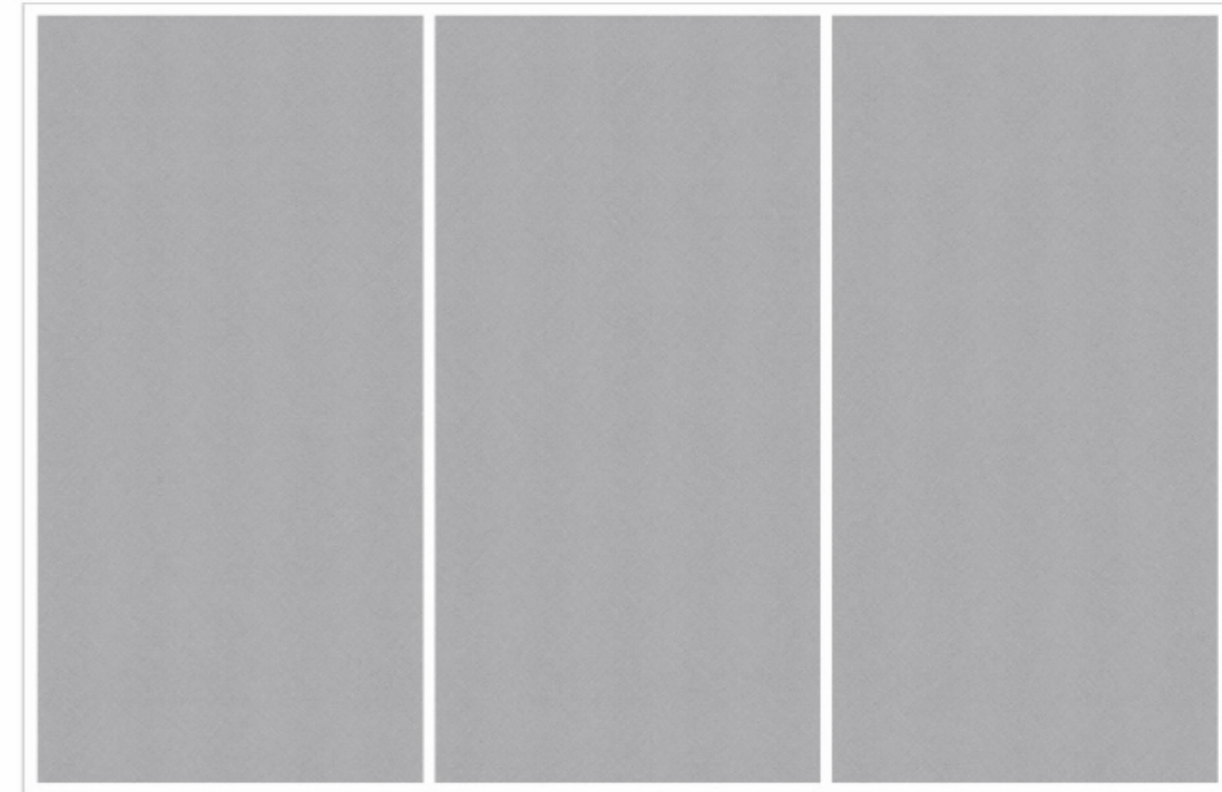


OSW-701932

ENJOY NATURE BUT DON'T WANT TO PLUNDER NATURAL RESOURCES



OSW-701931



OSW-701933

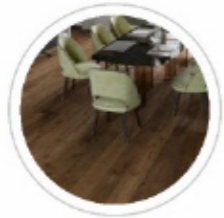
Special Notes: Pictures are just for reference only, because of printing caused chromatic difference from the objects, please consult with the real products.

■ WE CARE

■ WE VALUE

■ WE CREATE

Scope of Applications:



Living Room



Bedroom



Kitchen



Balcony

Product Features:



Antibacterial Properties



Water Resistance



Stain Resistance



Easy Maintenance



Waterproof



Eco-friendly



Construction Stability



Easy Maintenance



Fire Retardant



Mildew Resistant



Easy Installation



Heavy Metal Free

ENJOY NATURE BUT DON'T WANT TO PLUNDER NATURAL RESOURCES

SPC Wall Panel Installation Instructions

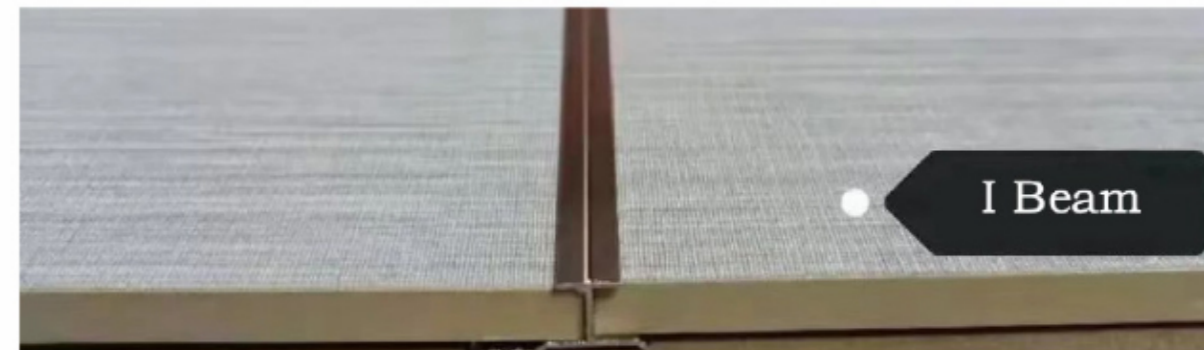
Tongue and Groove system for easy installation:

- **Surface Preparation:** Ensure the wall is clean and dry.
- **Start & Click:** Commence from the corner, securely click panels into place.
- **Continuation:** Align subsequent panels and secure them with screws or adhesive if necessary.
- **Trimming & Finishing:** Trim panels as required and apply finishing touches.



Aluminum I Beam Installation:

- **Surface Preparation:** Clean and dry the wall surface.
- **Panel and Trim Integration:** Install wall panels in conjunction with aluminum trims.
- **Alignment & Security:** Align panels accurately and secure them firmly using screws or adhesive.
- **Finalization:** Inspect, adjust, and complete the installation process.



Tips:

- Prioritize safety by wearing appropriate protective gear.
- Plan the layout meticulously before starting the installation.
- Adhere strictly to the manufacturer's instructions and guidelines.
- Seek professional assistance if uncertain about any step in the process.

Special Notes: Pictures are just for reference only, because of printing caused chromatic difference from the objects, please consult with the real products.



Vinyl flooring is a product composed of several layers of different materials sandwiched together to form a highly durable, practical and affordable floor covering.

■ WE CARE

■ WE VALUE

■ WE CREATE

ENVIRONMENTAL

All NEXTURE products have been tested for contribution to indoor air quality and independent testing proves that our products are very low emitting in terms of VOCs (volatile organic compounds), meeting the strictest standards for air quality.

ENJOY NATURE BUT DON'T WANT TO PLUNDER NATURAL RESOURCES

One Stop Flooring Solution

Produced in both tile and plank format across a range of patterns, colors and styles, Luxury vinyl tiles come in several installation options: glue-down for heavy traffic, loose-lay for quick renovation and click system for floating installation. Treated with our special UV coating surface protection for easy maintenance and extra resistance to scuffs, scratches and stains, the full series is suitable for use in commercial and residential interiors.



Sound Insulation



Underfoot Comfort



Anti-Slippery



Water-proof



Wear-resistant



Fire-proof



Easy Maintenance



Diversified choices
on colors and designs

■ WE CARE

■ WE VALUE

■

ENJOY NATURE BUT DON'T WANT TO PLUNDER NATURAL RESOURCES



NEXTURE Rigid Core Series (SPC)

NEXTURE Rigid Core is a collection of Stone Polymer Composite (SPC) luxury interlocking vinyl flooring tiles, replicating the natural beauty of wood and stone, ideal for all home interiors and light commercial areas.



OPS-82007



OPS-82008



OPS-82009



OPS-82003



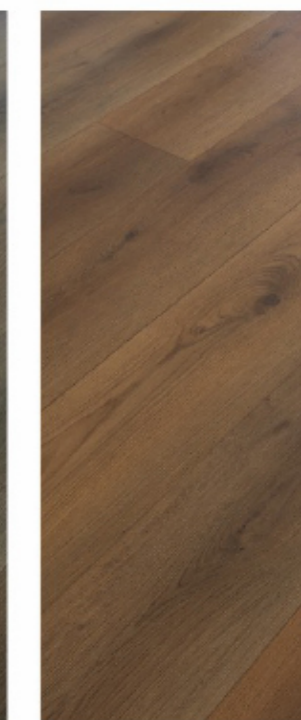
OPS-82038



OPS-82005



OPS-82012



OPS-82039

Specs: 12" x 36", 7.25" x 48" Wear layer: 0.3-0.7mm/ 10-30 mil (can be customized)
 Thickness: 4.0/5.0/6.0mm (can be customized)

Special Notes: Pictures are just for reference only, because of printing caused chromatic difference from the objects, please consult with the real products.

■ WE CARE

■ WE VALUE

■ WE CREATE



29/30 Create a better tomorrow.
Make better use of today.

OPS-82009

ENJOY NATURE BUT DON'T WANT TO PLUNDER NATURAL RESOURCES



OPS-82007

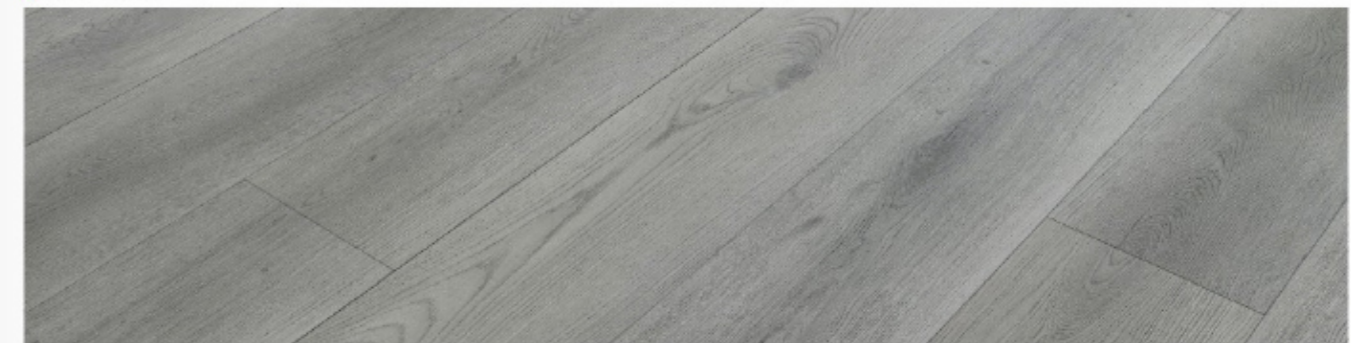
OPS-82007

Specs: 7.25" x 48" | Wear layer: 0.5mm | Thickness: 5.0mm



OPS-82009

Specs: 7.25" x 48" | Wear layer: 0.5mm | Thickness: 5.0mm



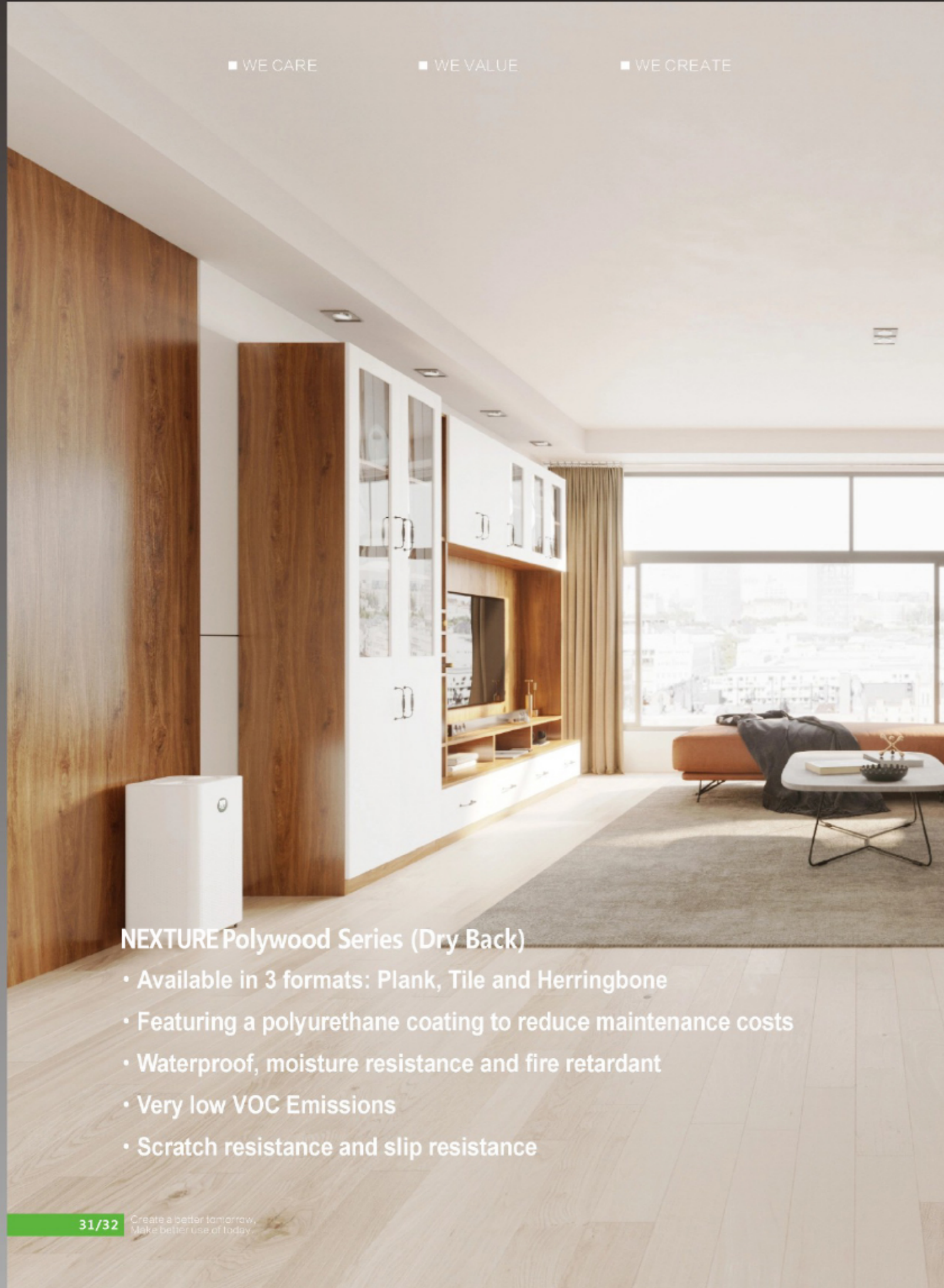
Special Notes: Pictures are just for reference only, because of printing caused chromatic difference from the objects, please consult with the real products.

■ WE CARE

■ WE VALUE

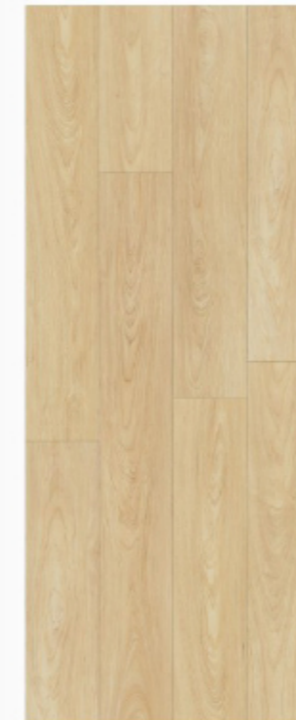
■ WE CREATE

ENJOY NATURE BUT DON'T WANT TO PLUNDER NATURAL RESOURCES



NEXTURE Polywood Series (Dry Back)

- Available in 3 formats: Plank, Tile and Herringbone
- Featuring a polyurethane coating to reduce maintenance costs
- Waterproof, moisture resistance and fire retardant
- Very low VOC Emissions
- Scratch resistance and slip resistance



OPA-81011



OPA-81012



OPA-81003



OPA-81019



OPA-81005



OPA-81013



OPA-81014



OPA-81015

Specs: 6" x 36", 7.25" x 48" Wear layer: 0.2-0.5mm/8-30 mil (can be customized)
 Thickness: 2.0/3.0/4.0mm (can be customized)

Special Notes: Pictures are just for reference only, because of printing caused chromatic difference from the objects, please consult with the real products.

■ WE CARE

■ WE VALUE

■ WE CREATE

ENJOY NATURE BUT DON'T WANT TO PLUNDER NATURAL RESOURCES



Polywood-Wood is a collection of luxury vinyl tiles, replicating the natural beauty of wood, realistic wood effect planks with authentic surface textures, designed for use in all residential and light commercial interiors.



OPA-81018



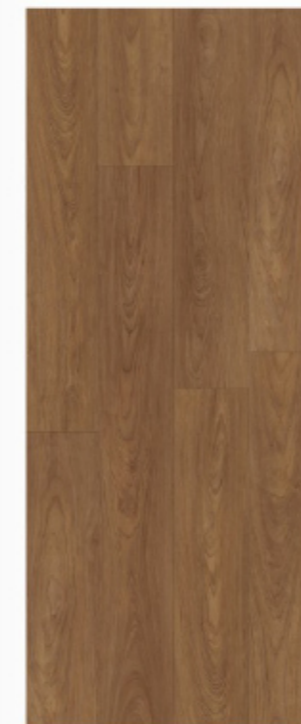
OPA-81016



OPA-81017



OPA-81020



OPA-81021



OPA-81022



OPA-81023



OPA-81024

Specs: 6" x 36", 7.25" x 48" Wear layer: 0.2-0.5mm/8-30 mil (can be customized)
Thickness: 2.0/3.0/4.0mm (can be customized)

Special Notes: Pictures are just for reference only, because of printing caused chromatic difference from the objects, please consult with the real products.

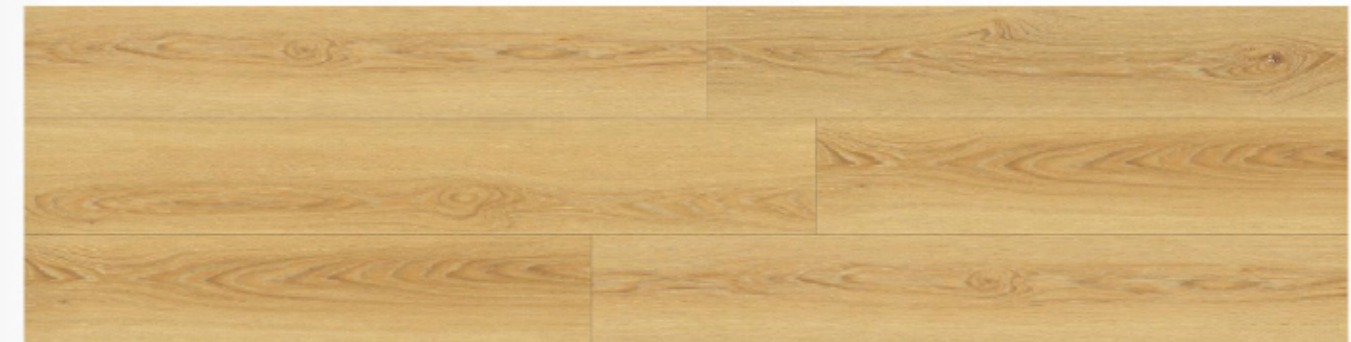


ENJOY NATURE BUT DON'T WANT TO PLUNDER NATURAL RESOURCES



▶ OPA-81012

Specs: 7.25" x 48" Wear layer: 0.3mm Thickness: 3.0mm



▶ OPA-81005

Specs: 7.25" x 48" Wear layer: 0.3mm Thickness: 3.0mm



Special Notes: Pictures are just for reference only, because of printing caused chromatic difference from the objects, please consult with the real products.



ENJOY NATURE BUT DON'T WANT TO PLUNDER NATURAL RESOURCES



OPA-81003

Specs: 7.25" x 48" Wear layer: 0.3mm Thickness: 3.0mm

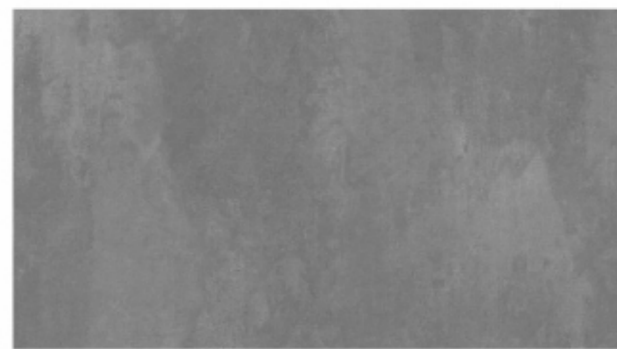
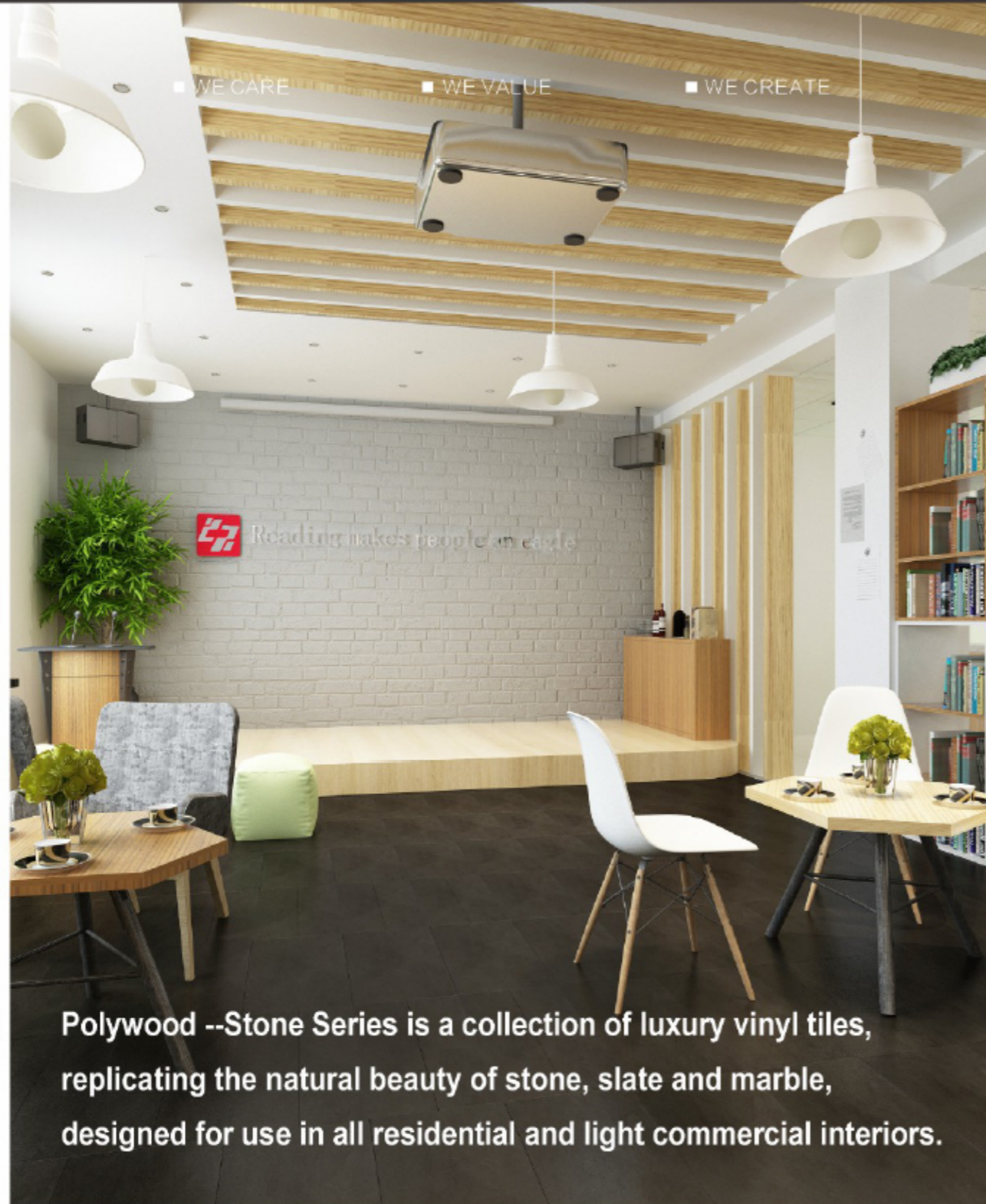


OPA-81013

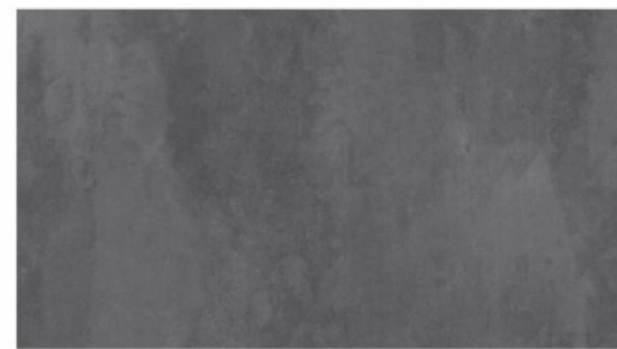
Specs: 7.25" x 48" Wear layer: 0.3mm Thickness: 3.0mm



Special Notes: Pictures are just for reference only, because of printing caused chromatic difference from the objects, please consult with the real products.

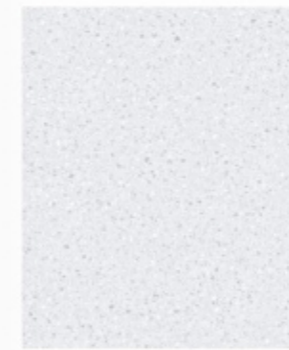


OPA-85007

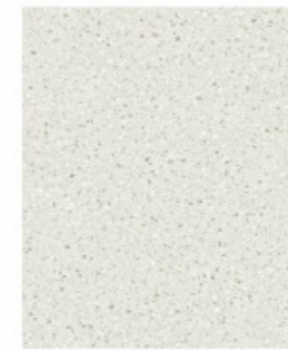


OPA-85009

ENJOY NATURE BUT DON'T WANT TO PLUNDER NATURAL RESOURCES



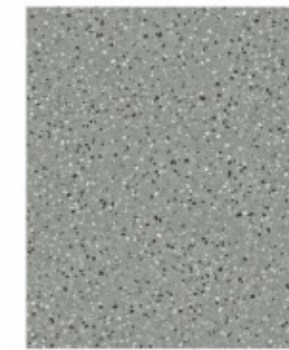
OPA-85017



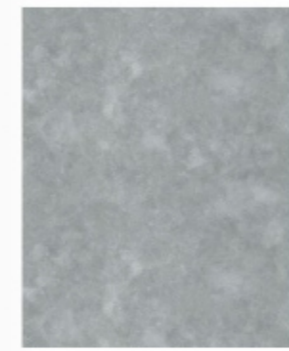
OPA-85015



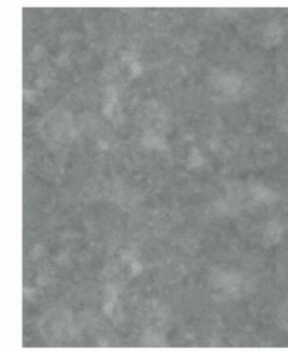
OPA-85016



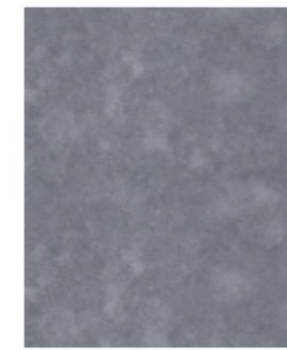
OPA-85018



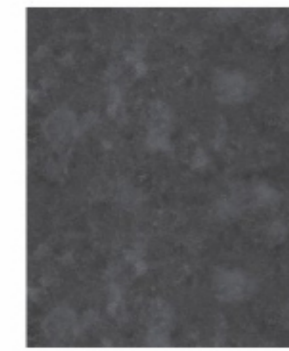
OPA-85005



OPA-85011



OPA-85008



OPA-85006



OPA-85012



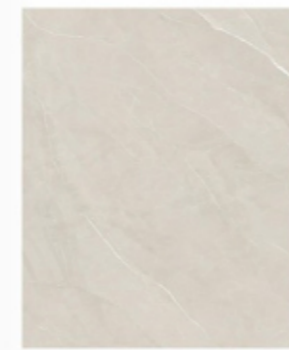
OPA-85013



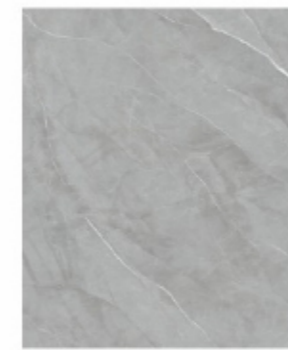
OPA-85014



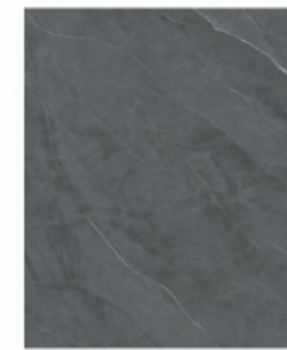
OPA-85019



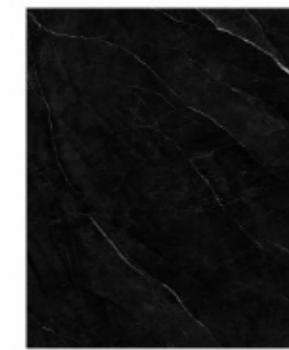
OPA-85022



OPA-85020



OPA-85023



OPA-85021

Specs: 18" x 18" Wear layer: 0.2-0.5mm/8-30 mil (can be customized)
 Thickness: 2.0/3.0/4.0mm (can be customized)

Special Notes: Pictures are just for reference only, because of printing caused chromatic difference from the objects, please consult with the real products.

■ WE CARE

■ WE VALUE

■ WE CREATE



41/42 Create a better tomorrow.
Make better use of today.

▶ OPA-85009

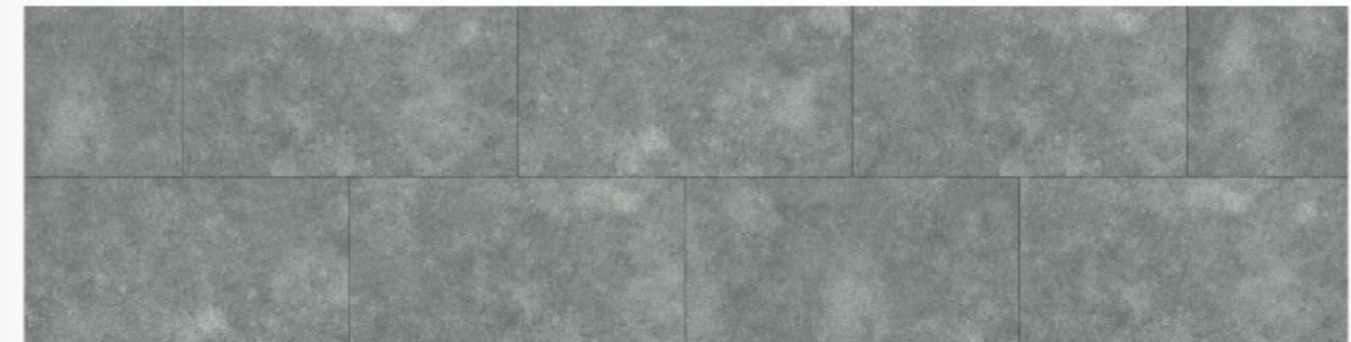
ENJOY NATURE BUT DON'T WANT TO PLUNDER NATURAL RESOURCES



▶ OPA-85011

▶ OPA-85011

Specs: 18" x 18" Wear layer: 0.3mm Thickness: 3.0mm



▶ OPA-85009

Specs: 18" x 18" Wear layer: 0.3mm Thickness: 3.0mm



Special Notes: Pictures are just for reference only, because of printing caused chromatic difference from the objects, please consult with the real products.

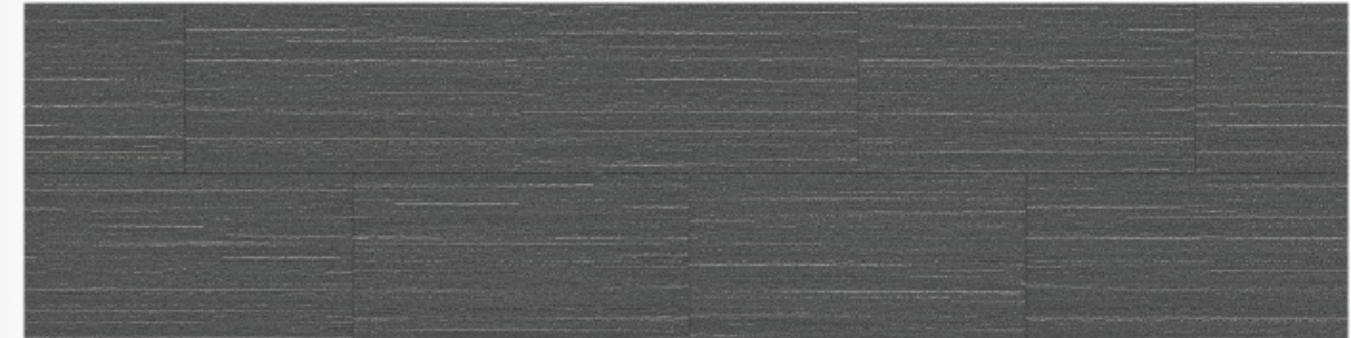


ENJOY NATURE BUT DON'T WANT TO PLUNDER NATURAL RESOURCES



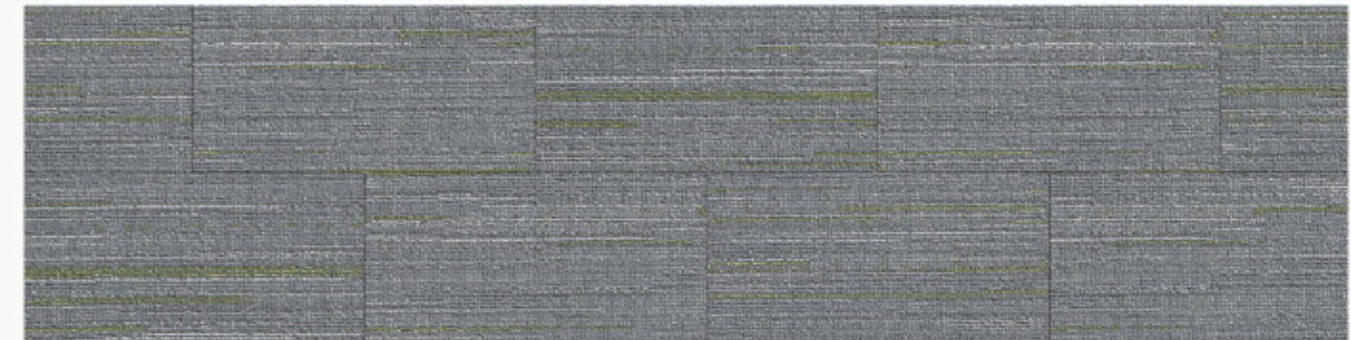
OPA-89007

Specs: 18" x 18" Wear layer: 0,3mm Thickness: 3,0mm



OPA-89020

Specs: 18" x 18" Wear layer: 0,3mm Thickness: 3,0mm



Special Notes: Pictures are just for reference only, because of printing caused chromatic difference from the objects, please consult with the real products.

■ WE CARE

■ WE VALUE

■ WE CREATE

NEXTURE Loose Lay Series

- Loose lay floor coverings designed to reduce installation time and provide easy access to under floor utilities. Available in tile and plank format, adhesive-free ranges can be installed over existing sub floors and can promote excellent indoor air quality. Suitable for use in commercial and residential interiors.
- Authentic reproductions of beautiful and natural wood, stone available in an adhesive-free (in most cases), ready to lay product, Suitable for use within very heavy commercial and residential situations.

ENJOY NATURE BUT DON'T WANT TO PLUNDER NATURAL RESOURCES



▶ OPL-30657



▶ OPL-32061



▶ OPL-30738



▶ OPL-30725



▶ OPL-32453



▶ OPL-32434



▶ OPL-14306



▶ OPL-30737

Specs: 7.25" x 48" Wear layer: 0.3-0.7mm/10-30 mil(can be customized)
Thickness: 4.0/5.0mm (can be customized)

Special Notes: Pictures are just for reference only, because of printing caused chromatic difference from the objects, please consult with the real products.



ENJOY NATURE BUT DON'T WANT TO PLUNDER NATURAL RESOURCES



OPL-14806



OPL-14808



OPL-101001



OPL-101005



OPL-30137



OPL-31969



OPL-32653



OPL-14311

Specs: 7.25" x 48" Wear layer: 0.3-0.7mm/10-30 mil(can be customized)
Thickness: 4.0/5.0mm (can be customized)

Special Notes: Pictures are just for reference only, because of printing caused chromatic difference from the objects, please consult with the real products.

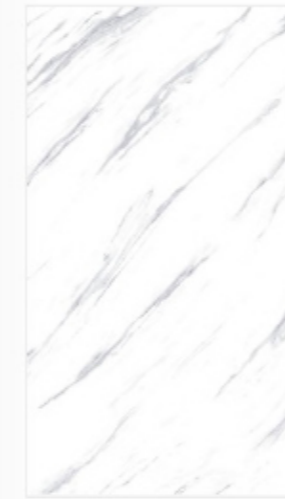


■ WE CARE

■ WE VALUE

■ WE CREATE

ENJOY NATURE BUT DON'T WANT TO PLUNDER NATURAL RESOURCES



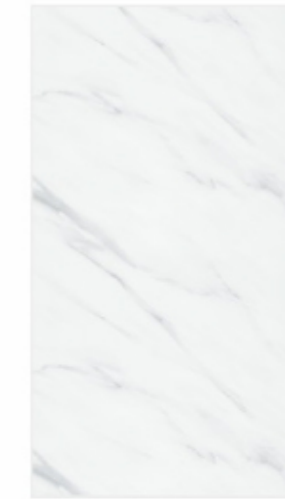
▶ OPL-5601



▶ OPL-5626



▶ OPL-7422



▶ OPL-203302



▶ OPL-101712



▶ OPL-10646



▶ OPL-10686



▶ OPL-10861

Specs: 18" x 18" Wear layer: 0.3-0.7mm/10-30 mil (can be customized)
 Thickness: 4.0/5.0mm (can be customized)

Special Notes: Pictures are just for reference only, because of printing caused chromatic difference from the objects, please consult with the real products.

■ WE CARE

■ WE VALUE

■ WE CREATE

SPC Specification

Item	Standard	Result
Dimensions	EN 649:2011/EN430	7.25" x 48" , 12"x36"
Total thickness	EN 649:2011/EN428	4.0/5.0/6.0mm (can be customized)
Wear layer	EN 429	0.3-0.7mm/10-30 mil (can be customized)
Weight (g/m ²)	EN 649:2011/EN430	≥1900kg/m ²
Peel resistance	Wear layer is more than 0.5mm	when the sample size is 100*50mm, the result is vertical≥80N horizontal≥80N
Modulus of rupture (mor)	EN 432	Horizontal≥80N; Vertical≥80N
Curling after heating	ISO23999	80°C ≤1.2mm
Residual indentation	EN 433	≤0.01mm
Dimensional stability (%)	ISO23999	80°C≤0.12%
Chemical products resistance	EN 423	Excellent
Click lock pulling force		Horizontal≥180N; Vertical≥160N
Stability after the heating cycle test	80°C ±15°C	shrinkage ≤0.10mm
Surface scratch-resistance	g	≥2500
Castor chair suitability	EN 425	Suitable
Colour fastness	EN ISO105-B02:2012	≥Grade6
Abrasion resistance	EN 660-2	Grade T
Stain resistance	ISO26987	No obvious traces of asphalt, mustard, shoe polish, ink
Fireproof	GB8624- 2006	Grade Bf1-s1, Grade I0
Slip-resistance	EN 13893, DIN 51130	R9

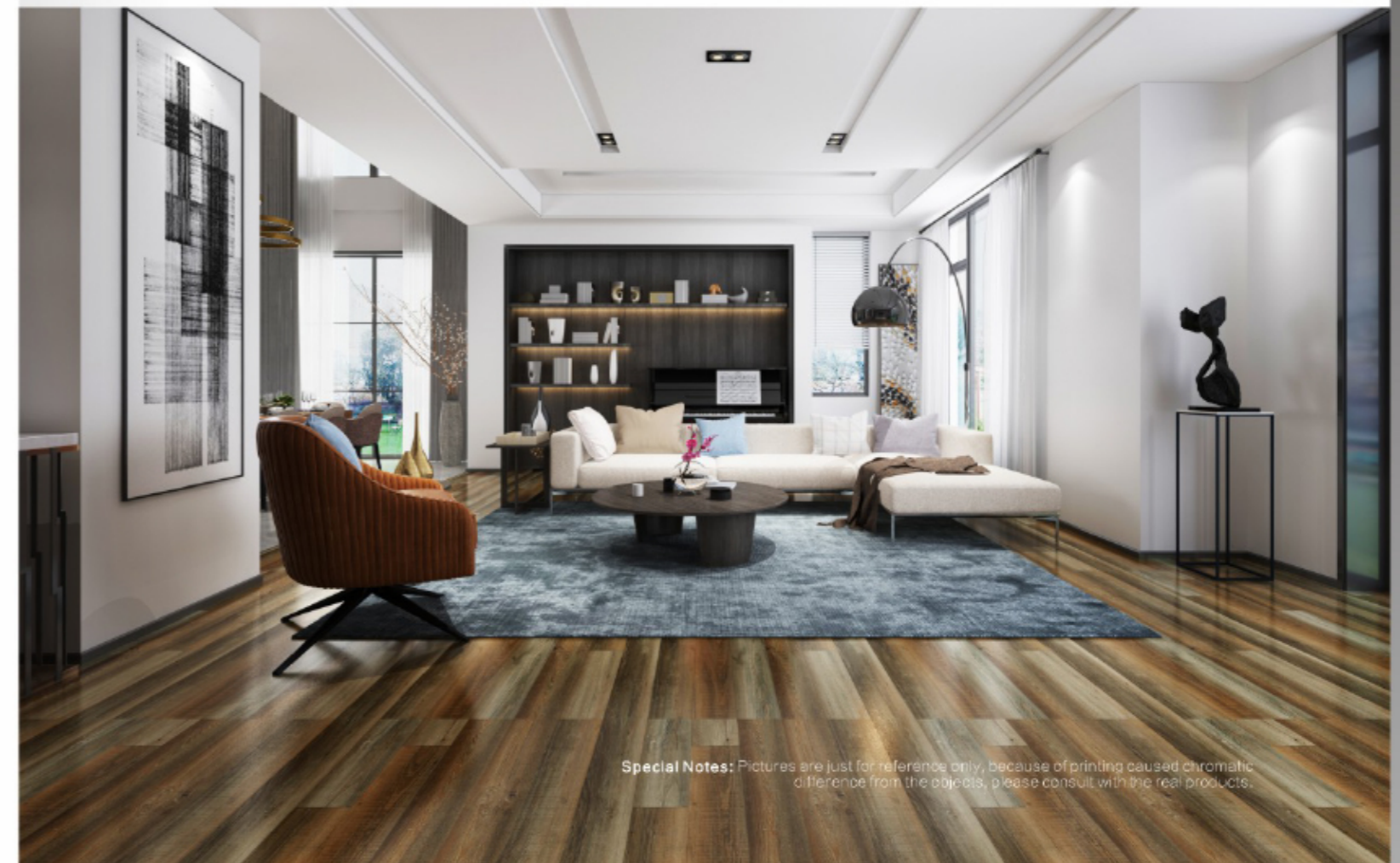
LOOSE LAY Specification

Item	Standard	Result
Dimensions	EN649:2011/EN430	18"x18" , 7.25"x48"
Total thickness	EN649:2011/EN428	4.0/5.0mm (can be customized)
Wear layer	EN429	0.3-0.7mm/10-30 mil (can be customized)
Weight (g/m ²)	EN649:2011/EN430	1720kg/m ²
Peel resistance	the wear layer is more than 0.2mm	when the sample size is 100*50mm, the result is vertical ≥50N horizontal ≥50N
Curling after heating	ISO23999	80°C ≤1.2mm
Residual Indentation	EN433	≤0.01mm
Dimensional stability (%)	ISO23999	80°C ≤0.12%
Chemical products resistance	EN423	Excellent
Surface scratch-resistance	g	≥2500
Colour fastness	EN ISO105-B02:2012	≥Grade6
Abrasion resistance	EN660-2	Grade T
Stain resistance	ISO26987	No obvious traces of asphalt, mustard, shoe polish, ink
Fireproof	GB8624- 2006	Grade Bf1-s1, Grade I0
Slip-resistance	EN13893, DIN51130	R9

ENJOY NATURE BUT DON'T WANT TO PLUNDER NATURAL RESOURCES

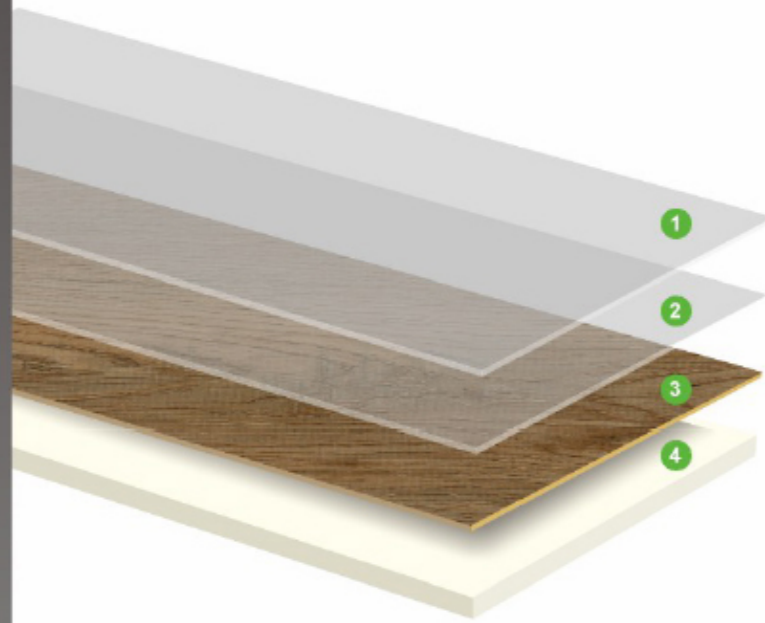
LVT Specification

Item	Standard	Result
Dimensions	EN649:2011/EN430	6"X36" , 7.25"x48" , 18"x18"
Total thickness	EN649:2011/EN428	2.0/3.0/4.0mm (can be customized)
Wear layer	EN429	0.2-0.5mm/8-30 mil (can be customized)
Weight (g/m ²)	EN649:2011/EN430	1720kg/m ²
Peel resistance	the wear layer is more than 0.2mm	when the sample size is 100*50mm, the result is vertical ≥50N horizontal ≥50N
Curling after heating	ISO23999	≤1.2mm after 80°C heating
Residual Indentation	EN433	≤0.01mm
Dimensional stability (%)	ISO23999	≤0.2% after 80°C heating
Chemical products resistance	EN423	Excellent
Surface scratch-resistance	g	≥2500
Colour fastness	EN ISO105-B02:2012	≥Grade6
Abrasion resistance	EN660-2	Grade T
Stain resistance	ISO26987	No obvious traces of asphalt, mustard, shoe polish, ink
Fireproof	GB8624- 2006	Grade Bf1-s1, Grade I0
Slip-resistance	EN13893, DIN51130	R9



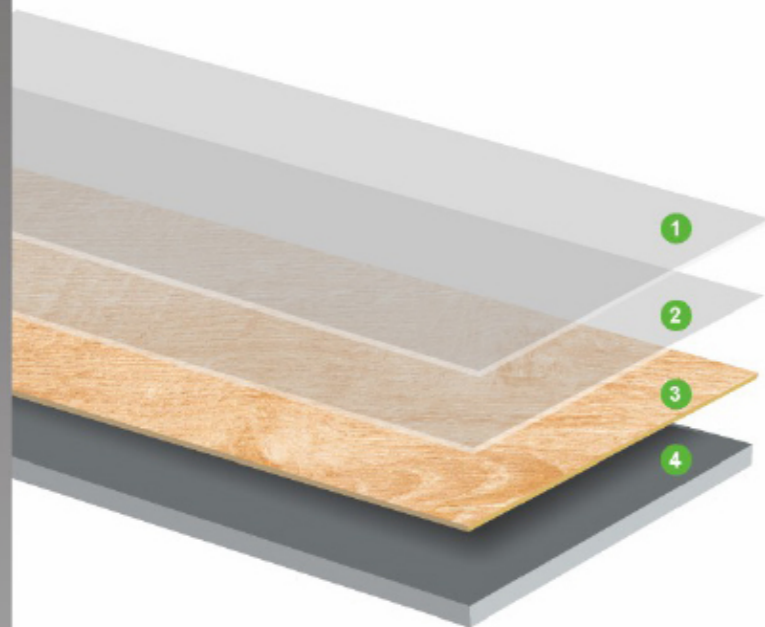
Special Notes: Pictures are just for reference only, because of printing caused chromatic difference from the objects, please consult with the real products.

Product structure Diagram



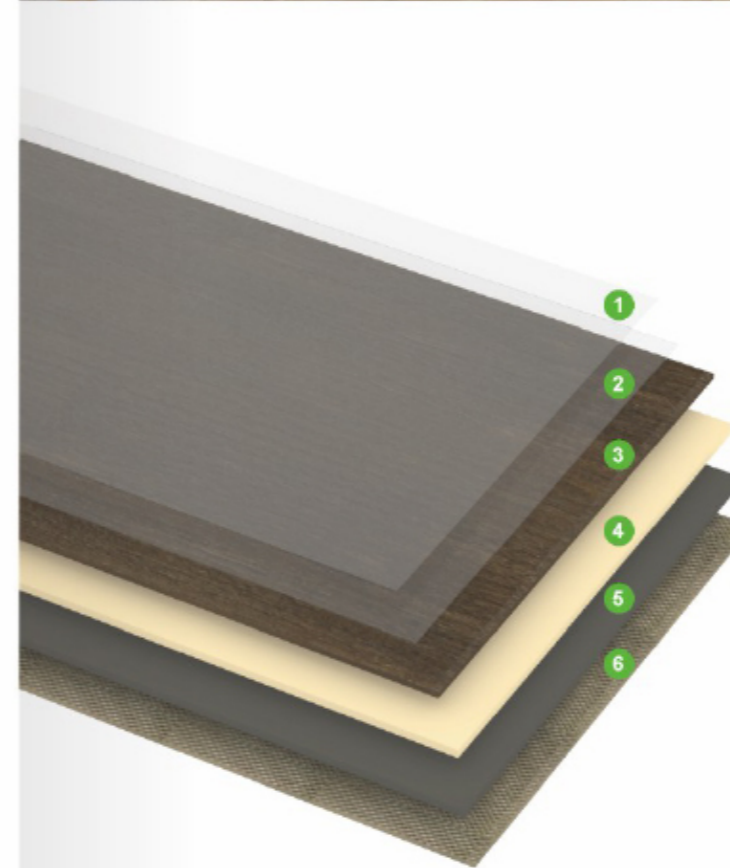
■ SPC product structure diagram

- 1 Superior enhanced UV coating**
 - a. Surface protection for excessive wear
 - b. Provides excellent clean ability
 - c. Superior stain resistance
 - d. Excellent durability and scratch resistance
- 2 Wear layer**
 - a. Provides added durability & additional scratch resistance
- 3 High definition printed Film**
 - a. Decorative film layer with realistic looks
- 4 Rigid Core / SPC**
 - a. Provides dimensional stability, will not expand or shrink
 - b. Dense extruded core provides more dent resistance
 - c. Waterproof Core
- 5 IXPE Underlay (Customized if required)**
 - a. Excellent sound reduction and noise reduction
 - b. Reduces sub floor imperfection



■ LVT product structure diagram

- 1 Superior enhanced UV coating**
 - a. Surface protection for excessive wear
 - b. Provides excellent clean ability
 - c. Superior stain resistance
 - d. Excellent durability and scratch resistance
- 2 Wear layer**
 - a. Provides added durability & additional scratch resistance
- 3 High definition Printed Film**
 - a. Decorative film layer with realistic looks
- 4 Dimensional stable base layer**
 - a. Provides dimensional stability, will not expand or shrink
 - b. 100% virgin material



■ LOOSE LAY product structure diagram

- 1 UV Coating**
 - Provides the durable finish
 - 2 Wear Layer**
 - Improves the resistance to dirt, stain and abrasion
 - 3 Print Films**
 - Print Films Faithfully replicate and enhance the unique designs found in nature.
 - 4 Middle Lays**
 - 5 PVC Backing**
 - 6 Slip resistance layer**
- Stable dimensional performance because of the similar composition material on the top and bottom

Special Notes: Pictures are just for reference only, because of printing caused chromatic difference from the objects, please consult with the real products.

Care and Maintenance

- Use non-staining mats on your floor. Do not put rubber-backed, latex-backed or coco fiber mats on your floor because they will stain or damage the surface.
- Close your curtains or blinds where extreme sunlight hits the floor. A combination of heat and sunlight causes most home furnishings to fade or discolor.
- Support furniture with wide-bearing, non-staining floor protectors. Ideally, the protectors should be at least one inch in diameter, made of non-pigmented hard plastic, and rest flat on the floor. Non-staining felt protectors are also acceptable. Casters (type W), felt pads or floor protectors are recommended for all moveable furniture. Use protection mats under chairs with casters to avoid abrasion of the vinyl flooring. Make sure that any metal protectors are rust-proof.
- If you need to move heavy furniture and/or appliances across the floor, always use strips of wood or hardboard runways to protect the floor. Always use runways even if you have an appliance dolly, or even if the heavy objects are equipped with wheels or rollers.
- Sweep your flooring regularly with a damp cloth and only with water at least once a week.
- Prevent stains by wiping up spills promptly.
- Occasional mopping with Rinse-Free Cleaner is recommended when dirt builds up and sweeping alone is not sufficient. Follow strictly the guidelines given on the bottle. Do not use soap or detergent products as they will leave a dulling film.

All Luxury Vinyl Plank requires effective cleaning and maintenance to ensure durability, appearance and safety. How frequent the floor must be maintained depends largely on the amount and type of traffic and the amount and frequency of soiling. The type and color are important, too. For example, solid colored and smooth embossed floors will show scuffs, scratches, dirt and general wear more than multi-colored or textured embossed patterns. Likewise, light colors will show marks more than darker colors. Although Opel Flooring can make general recommendations, the local conditions will determine what specific maintenance is needed. It is the responsibility of the maintenance contractor to set up a maintenance program meeting the needs of the facility.

Maintenance requirements for various installations such as an office suite versus a supermarket, restaurant dining area, large or small retail store, or residential applications may vary.

For stubborn stains, use denatured alcohol or stain remover made specifically for luxury vinyl. Gently rub at the stain until it is removed.

Don't Use:

Do not use detergents, abrasive cleaners or "mop and shine" products, they may leave a dull film on your floor. Do not use paste wax or solvent-based polishes. Do not use beater bar when vacuuming because it can visibly damage the floor surface. Do not use ammonia, acetone, lacquer thinner or highly abrasive scrubbing tools.

We Care

We Value

We Create

Environmental sustainability



Environmental



Energy-saving



Economic